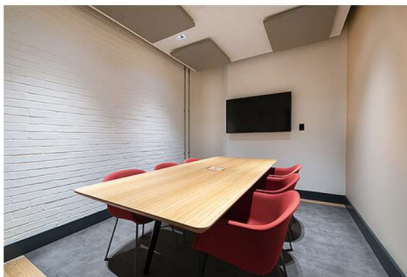


OFFICE TO LET



Pall Mall Deposit, Barlby Road, Ladbroke Grove, W10 6BL

£ 45,840 Per Annum

 Ladbroke Grove

 Office

 PL501

## Highlight Features

- ✓ 24 Hour Access
- ✓ Available Now
- ✓ Cafe
- ✓ CCTV
- ✓ Centre Manager
- ✓ Close to Tube Station
- ✓ Cycle Racks
- ✓ Disabled Access
- ✓ Service Charge, Electricity & Wi-Fi Inc

## Description

A grand building in the heart of Notting Hill with a state-of-the-art renovation, it comes complete with airy communal spaces and original architectural features. Pall Mall Deposit combines tradition with a quirky and modern edge and attracts a variety of multimedia and publishing businesses. Offering a range of office and studio spaces this refurbished former furniture deposit has its own on-site café, break out spaces and a passenger and goods lift. Whilst the exterior of the building retains its historical charm, the interior has undergone a refurbishment to become purpose built for office and studio space. The rent is inclusive of service charge, electricity and Wi-Fi.

### **Location:**

Closely located to the world-famous Portobello Market, this charming building is in the most thriving, trendy part of West London. Ladbroke Grove Station is within 15-minute walk. A40 is also close by and provides a quick access in and out of West London.

### **Accommodation:**

Stunning 5th floor office: 73 sq m / 786 sq ft.

### **Terms:**

Available now, for a term to be negotiated at a monthly rent of £3,820. Service charges, electricity and Wi-Fi are included in the rent.

### **Business Rates:**

Applicants are advised to make their own enquiries with London Borough of Kensington and Chelsea Council.

### **EPC:**

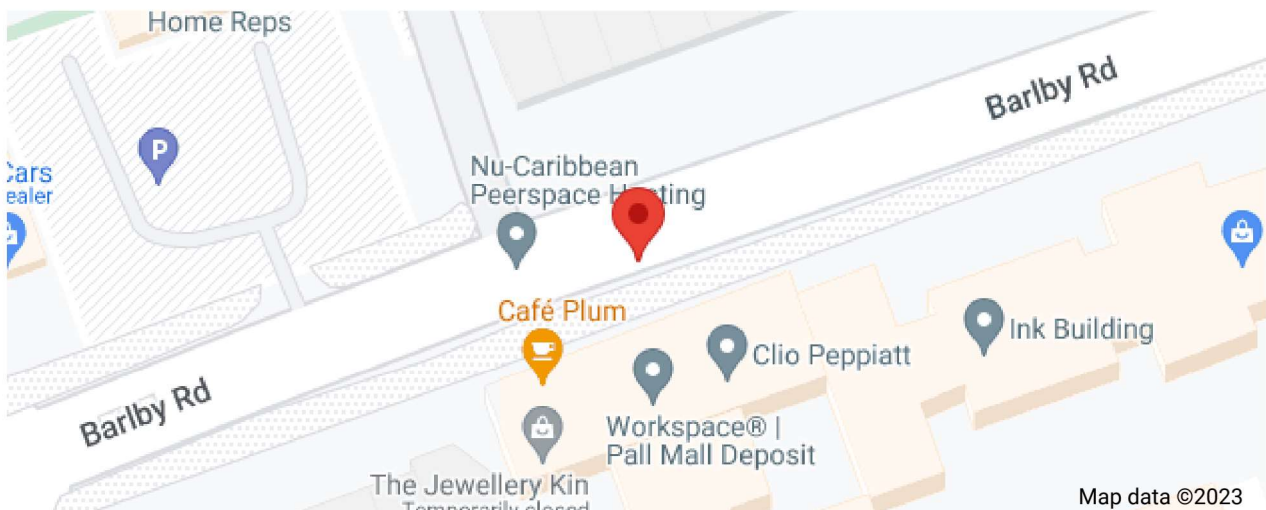
Energy performance certificates available upon request.

### **Viewings:**

Strictly by an appointment via Kingworths.

---

## Map



## Interested In This Property?

Book a viewing using the form or get in touch with us on the details below:

Kingworths

Westlink House, 981 Great West Road, Brentford, TW8 9DN

Tel: 020 8226 0141

Email: [info@kingworths.com](mailto:info@kingworths.com)