



# SUMMARY OF BLOCK 15

ODIN ENERGY OMAN  
April 2021

# **MINIMUM WORK PROGRAM**

## **CURRENT PROGRAM**

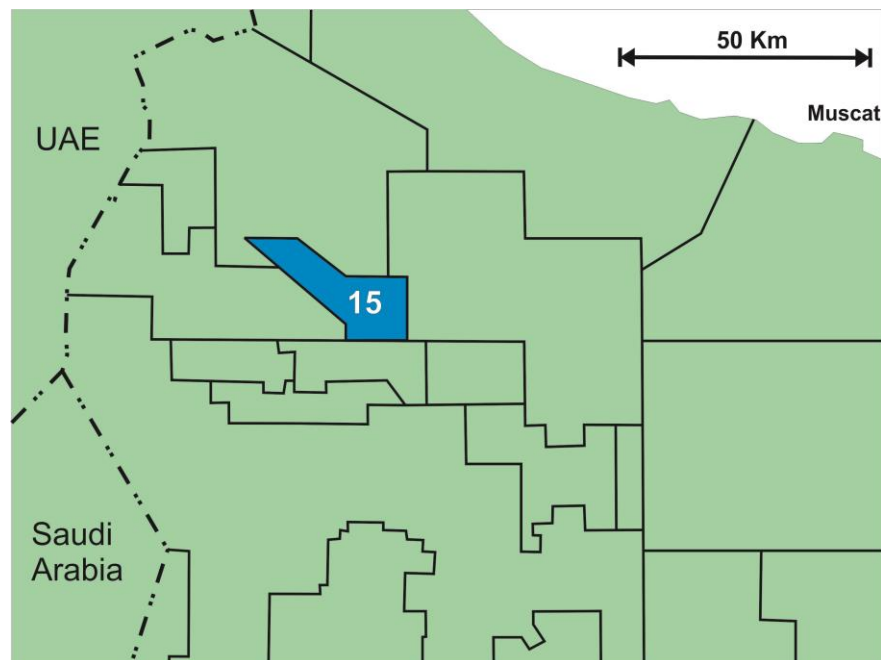
- 2 wells to base Shuaiba (~3,000 m)
- Ataya-1 STK3 appraisal well

- 
- Reprocessing of Thimar 3D
  - Carry out study of deep prospectivity (incl. reprocessed data)
  - Carry out study of unconventional prospectivity (incl. cores from new wells)

**2021-2022 BUDGET ~\$ 20 MM**

**TO BE COMPLETED WITHIN 18 MONTHS**

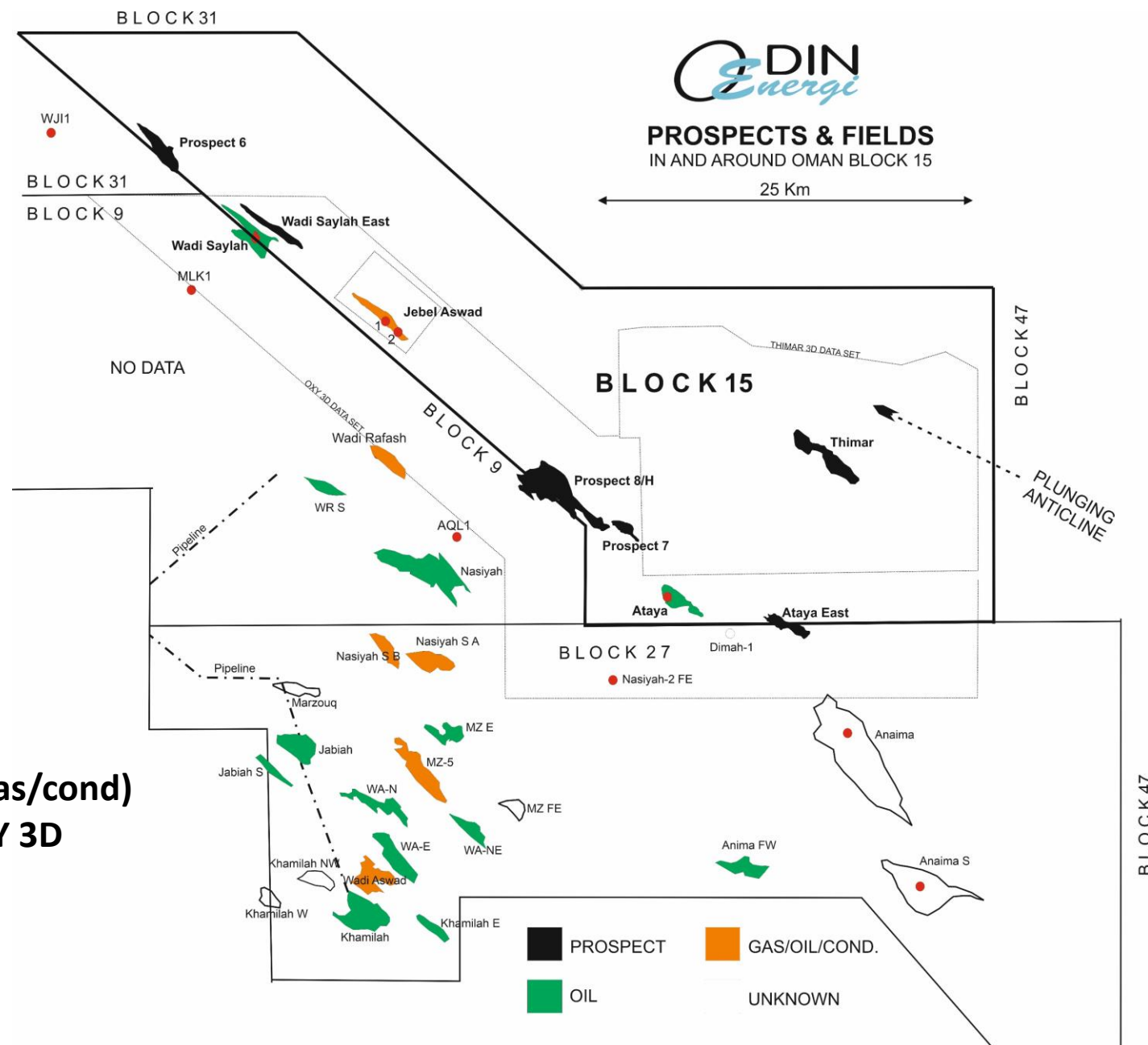
# BLOCK 15 - 1,400 Km<sup>2</sup>



## HISTORY

2005-10 TETHYS op  
 2011-15 ODIN op  
 2015-21 HCF op  
 2021- ODIN op

3D, JAS-1 & -2 (gas/cond)  
 JAS-3, access OXY 3D  
 3D, ATA-1 (oil)



# 2021-22 WORK PROGRAM



APPRAISAL/DEVELOPMENT WELL  
(Ataya-1 STK3)



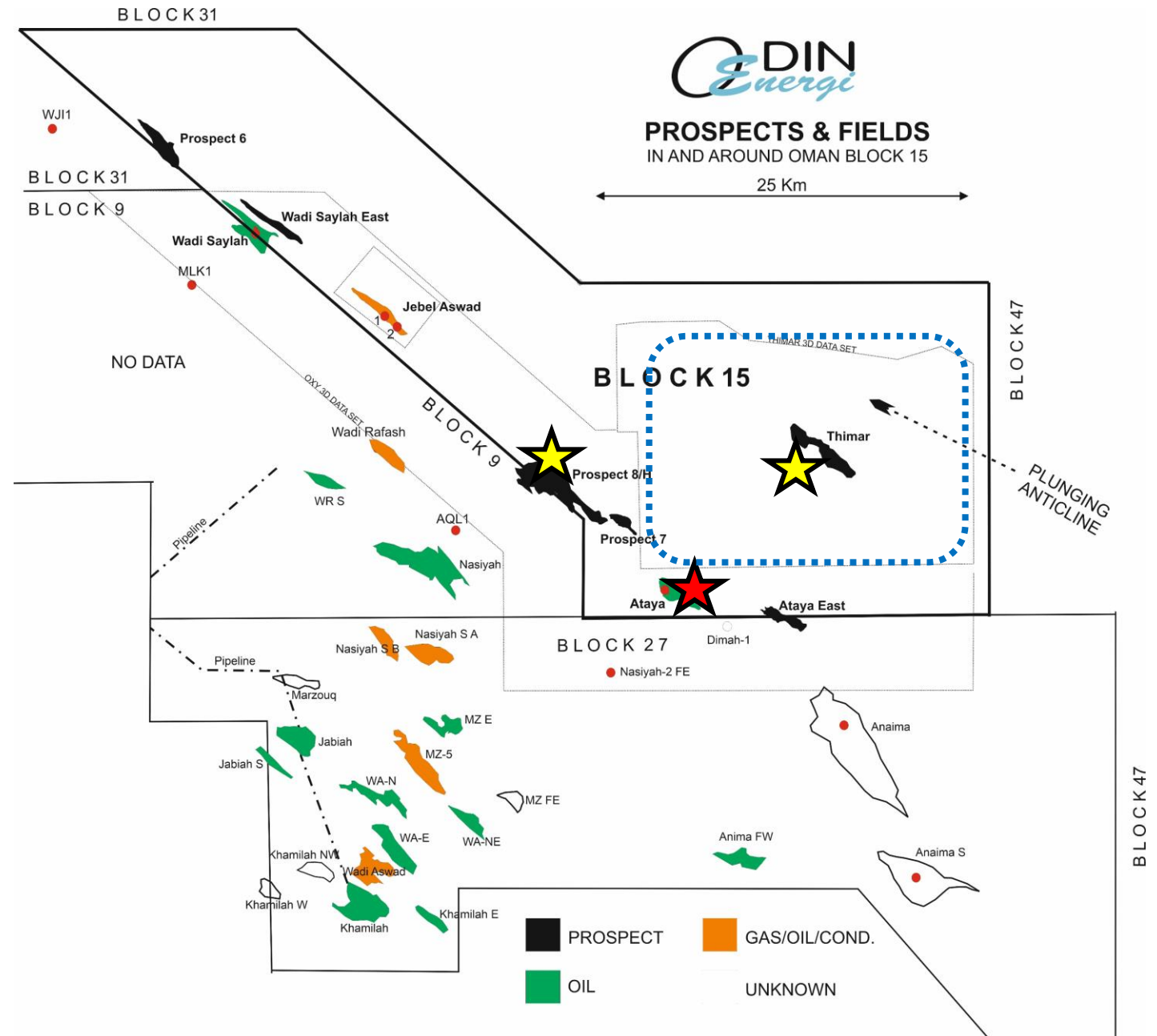
EXPLORATION WELLS  
(Thimar-1 and Prospect8-1)



Reprocessing

Unconventional study

Deep strat study



# BLOCK 15

## 2021-22 DRILLING PROGRAM

**PROSPECT 8 STRUCTURE**  
**5 MMBO POTENTIAL**  
**\$ 104 MM CONTR. NCF**

Prospect 8/H

**THIMAR STRUCTURE**  
**10 MMBO POTENTIAL**  
**\$ 257 MM CONTR. NCF**

Thimar

Prospect 7

siyah

Ataya

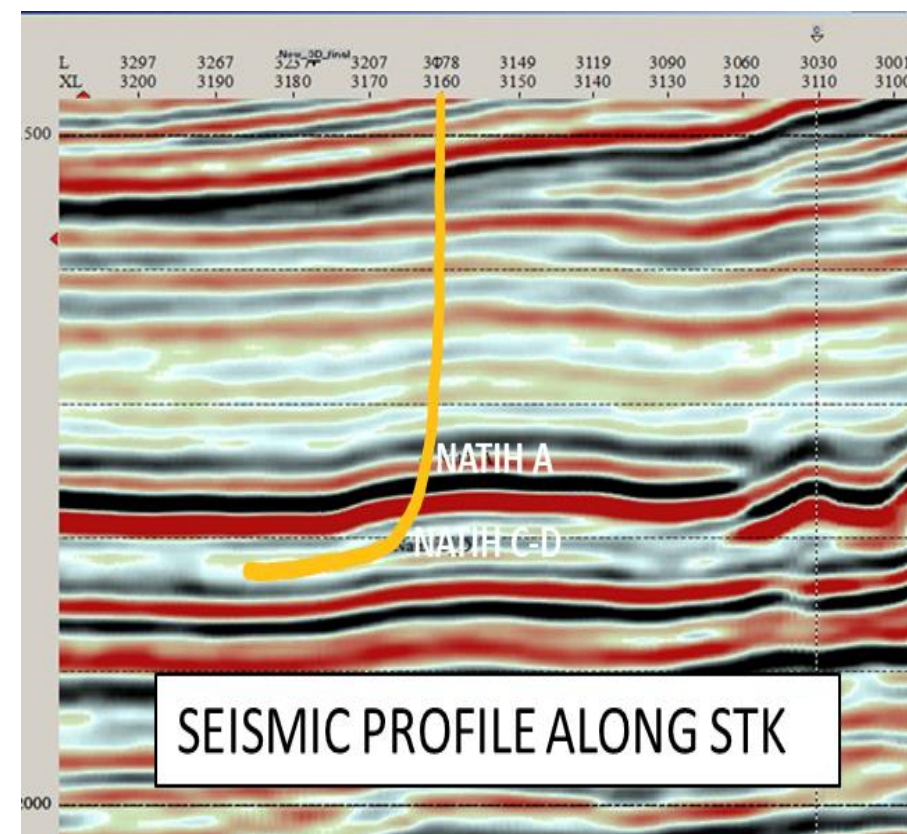
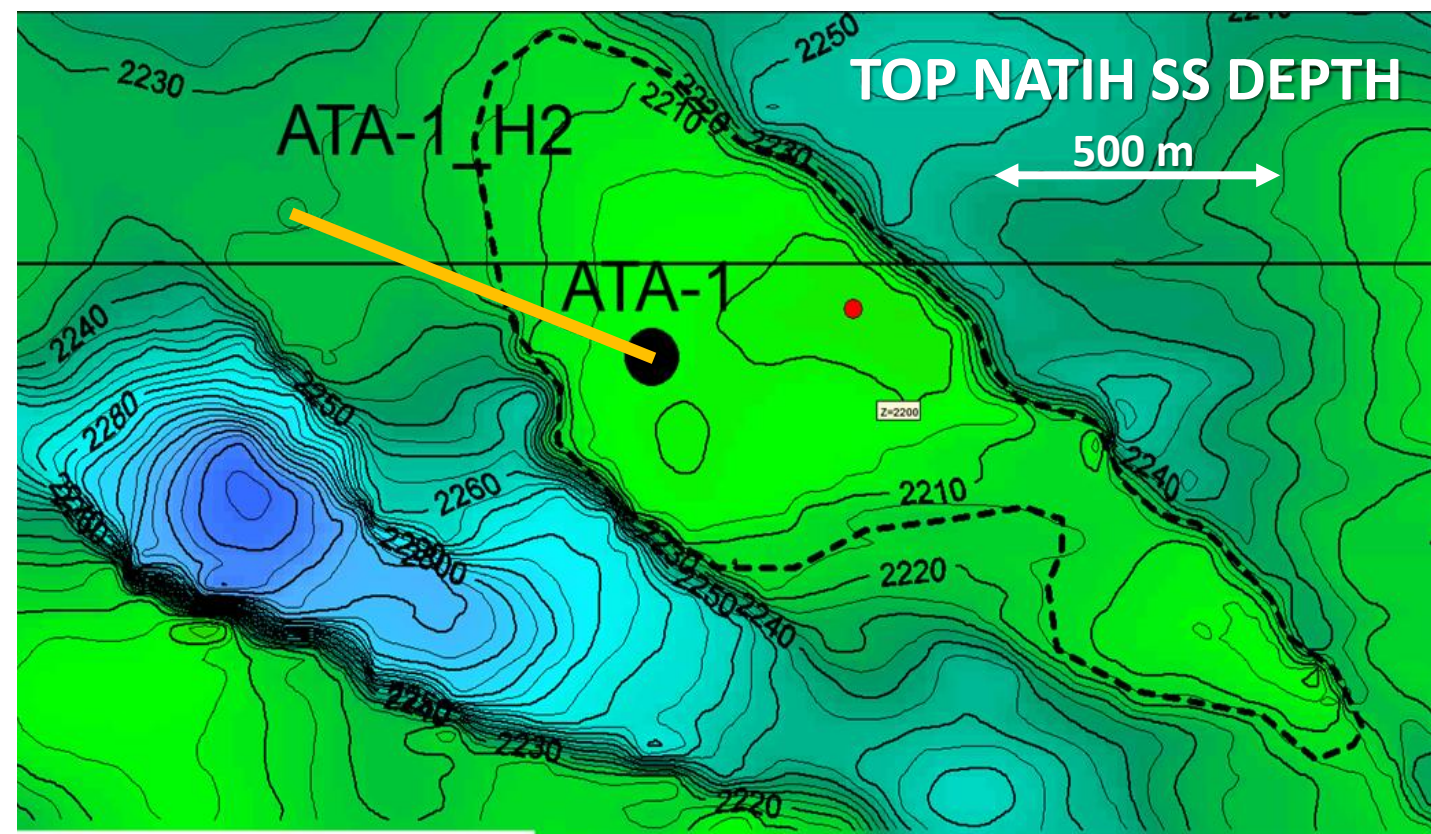
Ataya East

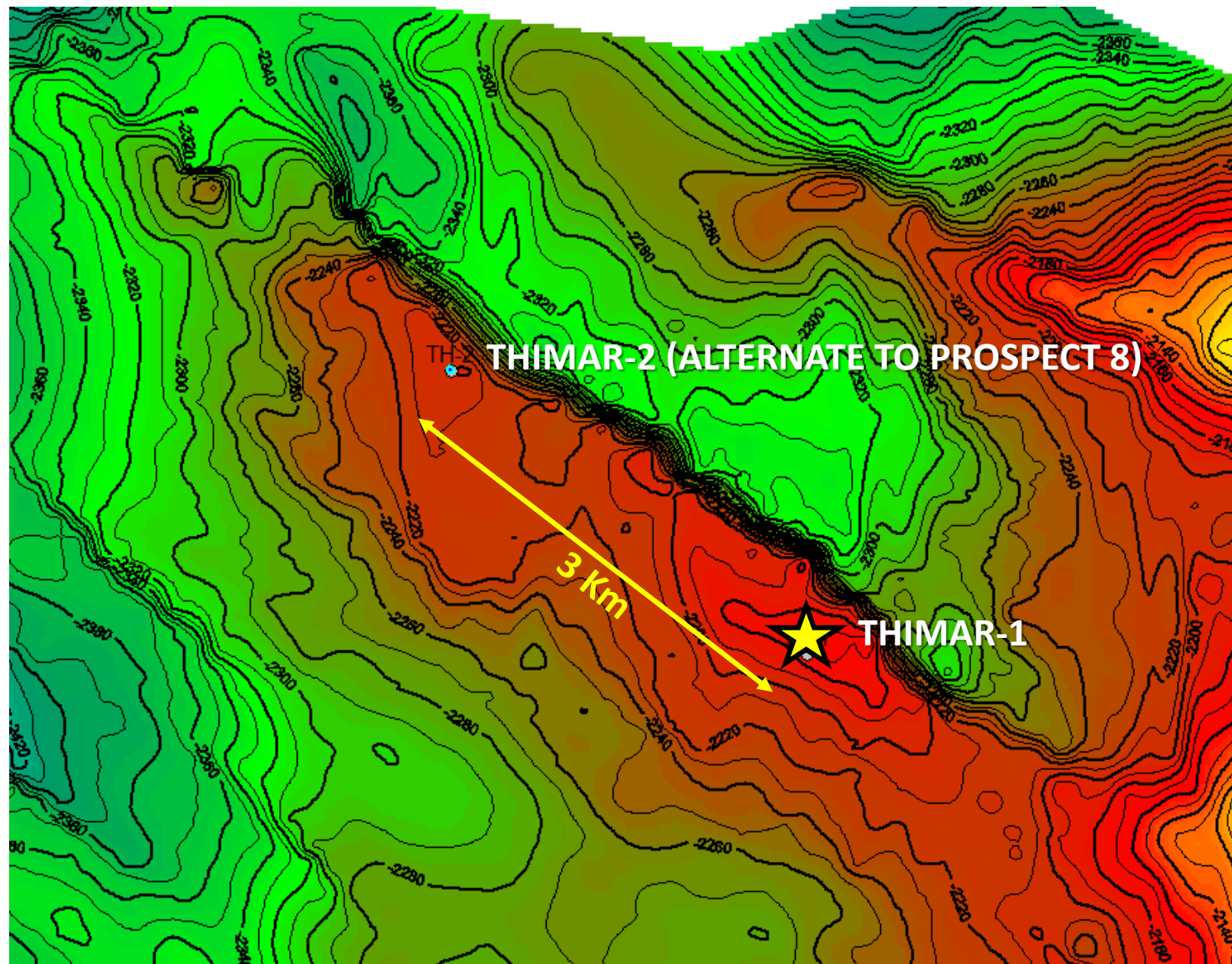
**ATAYA STRUCTURE**  
**2 MMBO POTENTIAL**  
**\$ 32 MM CONTR. NCF**

<b>TOTALS:</b>	<b>17 MMBO RES.</b>	<b>\$ 393 MM CONTRACTOR NCF</b>
----------------	---------------------	---------------------------------



# APPRAISAL/DEVELOPMENT OF ATAYA DISCOVERY





## THIMAR STRUCTURE

**10 MMBO RESERVES  
POTENTIAL IN NATIH**

**SHUAIBA WITH LIMITED  
POTENTIAL**

**CONTRACTOR NCF=  
\$ 257 MM**



MAX. AMPLITUDE: 25 m

3.4 Km

## PROSPECT 8

**5 MMBO RESERVES  
POTENTIAL IN NATIH  
WITHIN BLOCK 15**

**SHUAIBA WITH LIMITED  
POTENTIAL**

**CONTRACTOR NCF=  
\$ 104 MM**



# OTHER CONVENTIONAL PROSPECTS

**PROSPECT 6:** 4 MMBO reserves potential

**WADI SAYLAH/  
WADI SAYLAH E:** 1-2 MMBO reserves potential

**PROSPECT 7:** <1 MMBO reserves potential

**ATAYA EAST:** 1½ MMBO reserves potential (on Block 15)

