



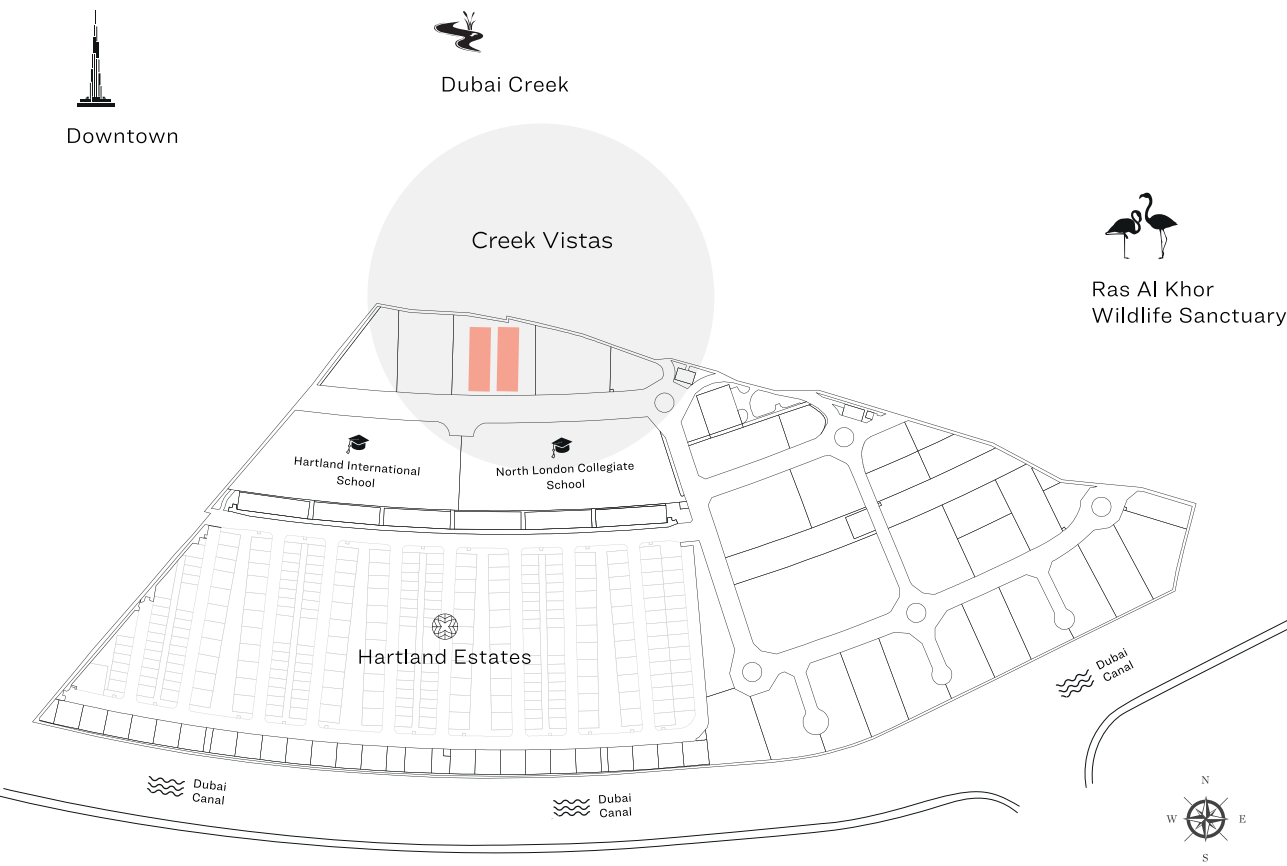
SOBHA HARTLAND

CREEK VISTAS





MASTER PLAN



A P A R T M E N T F E A T U R E S



Variety of
unit plans



Impeccable
interiors



Covered
car parking



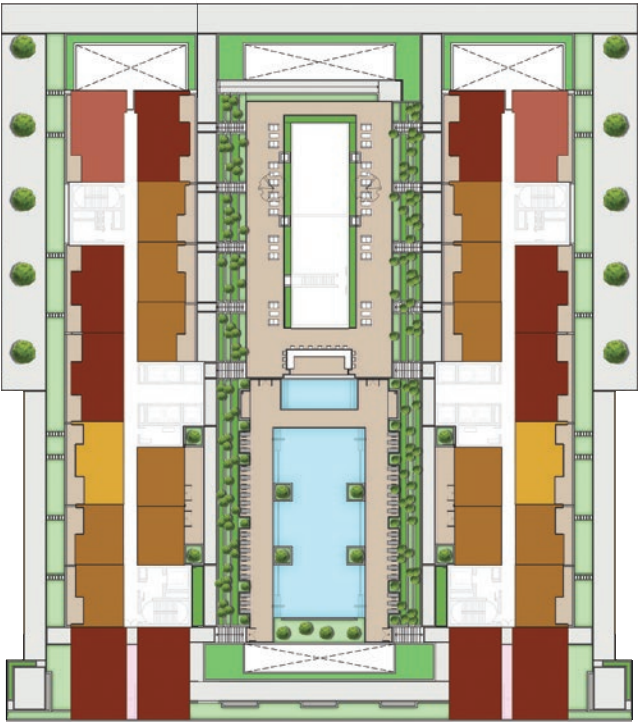
Balcony
in all units



Bedroom
wardrobe in all units

UNIT PLAN

- 1 BEDROOM TYPE A
- 1 BEDROOM TYPE B
- 2 BEDROOM TYPE A
- 2 BEDROOM TYPE B

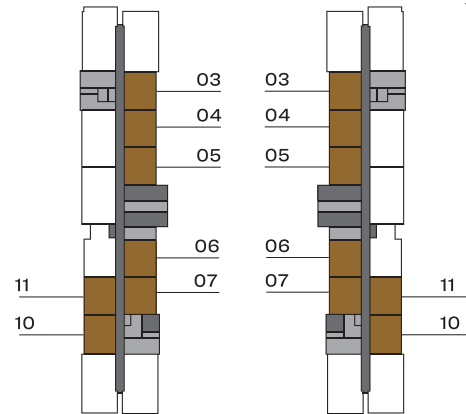


1 BEDROOM APARTMENT

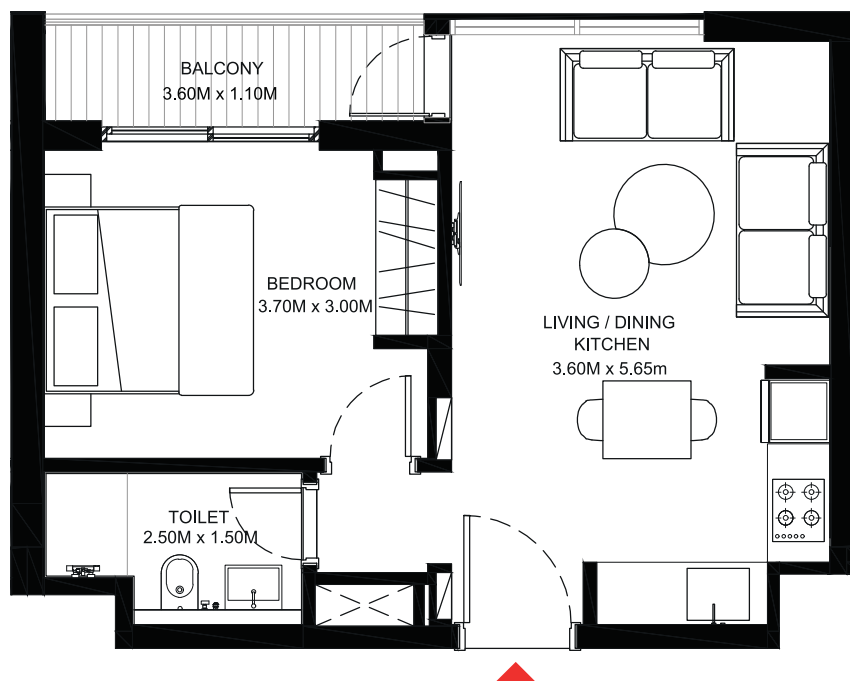
TYPE A (with balcony)

Downtown and Canal view

Net Saleable Area - 494 Sq. ft.



UNIT TYPE - 1A | LEVELS 2 - 28

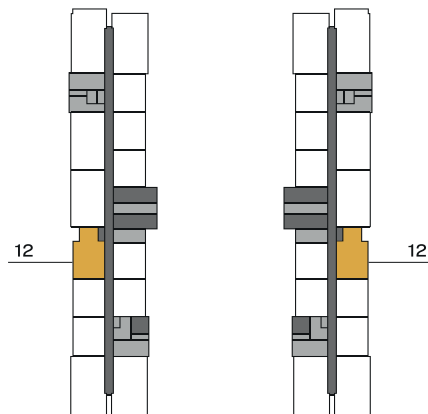


Disclaimer: 1. All dimensions are in metric, measured to wall finishes. 2. All materials, dimensions & drawings are approximate. 3. Information is subject to change without notice, at developer's absolute discretion. 4. Actual area may vary from the stated area. 5. Drawings are not to scale. 6. All images used are for illustrative purposes only and do not represent the actual size, features, specifications, fittings and furnishings. 7. The developer reserves the right to make revisions/ alterations, at its absolute discretion, without any liability whatsoever.

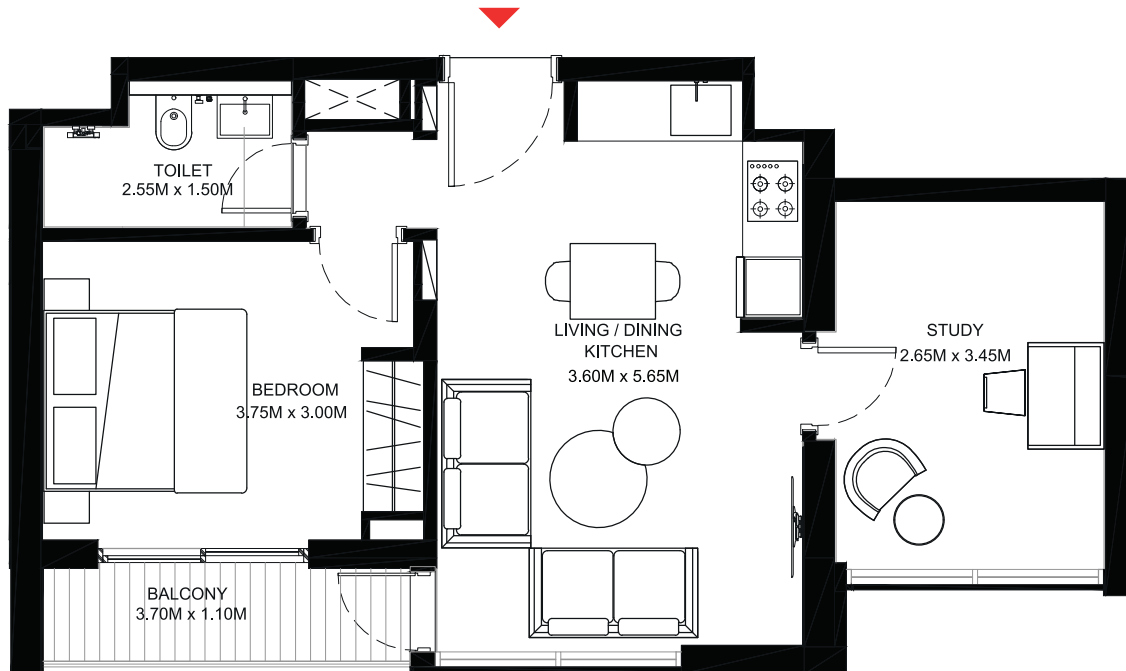
1 BEDROOM APARTMENT

TYPE B (with balcony and study)

Net Saleable Area - 839 Sq. ft.



LEVEL - PODIUM

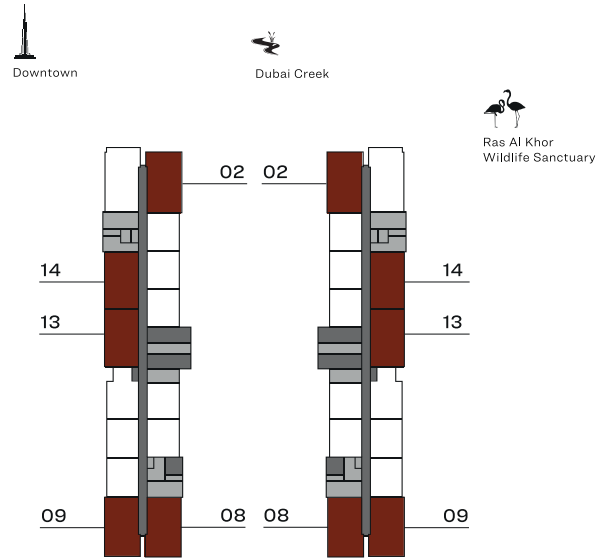


Disclaimer: 1. All dimensions are in metric, measured to wall finishes. 2. All materials, dimensions & drawings are approximate. 3. Information is subject to change without notice, at developer's absolute discretion. 4. Actual area may vary from the stated area. 5. Drawings are not to scale. 6. All images used are for illustrative purposes only and do not represent the actual size, features, specifications, fittings and furnishings. 7. The developer reserves the right to make revisions/ alterations, at its absolute discretion, without any liability whatsoever.

2 BEDROOM APARTMENT

TYPE A (all with two balconies)

Net Saleable Area - 806 Sq. ft.

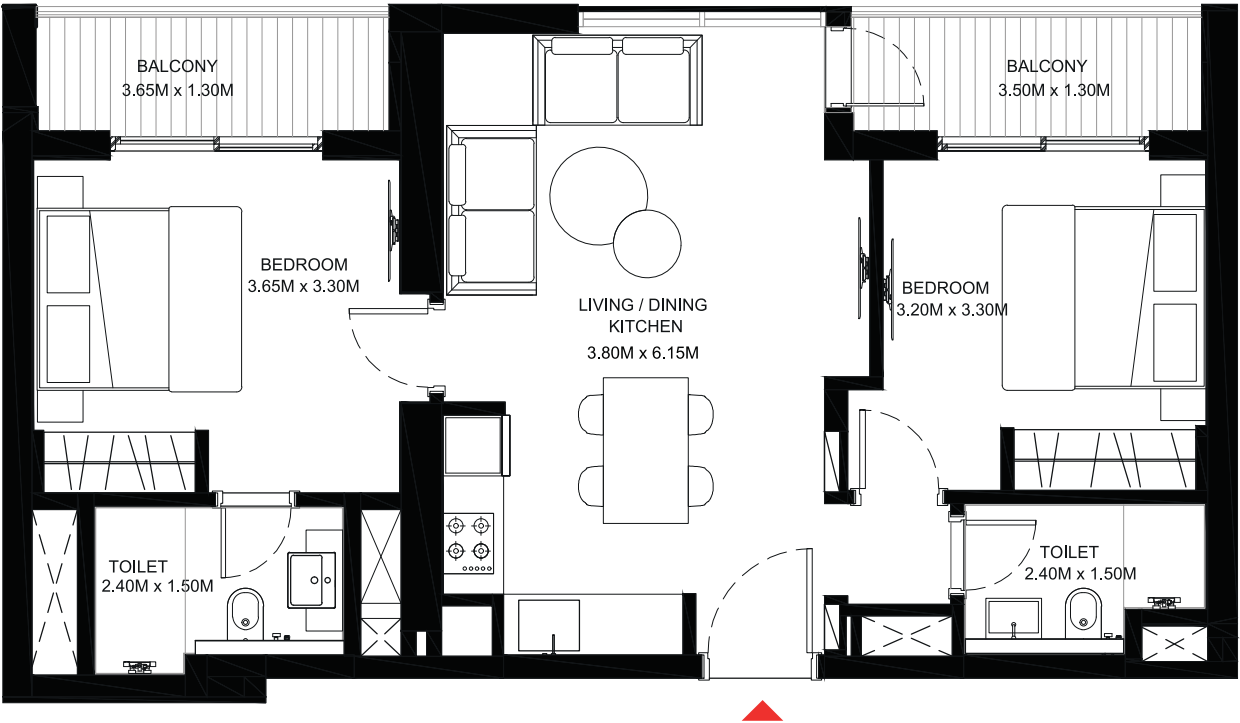


UNIT TYPE - 2A | LEVELS 2 - 28

Hartland Estates

Dubai Canal

Dubai Canal

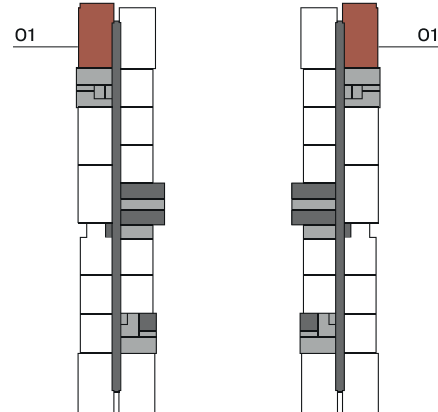


Disclaimer: 1. All dimensions are in metric, measured to wall finishes. 2. All materials, dimensions & drawings are approximate. 3. Information is subject to change without notice, at developer's absolute discretion. 4. Actual area may vary from the stated area. 5. Drawings are not to scale. 6. All images used are for illustrative purposes only and do not represent the actual size, features, specifications, fittings and furnishings. 7. The developer reserves the right to make revisions/ alterations, at its absolute discretion, without any liability whatsoever.

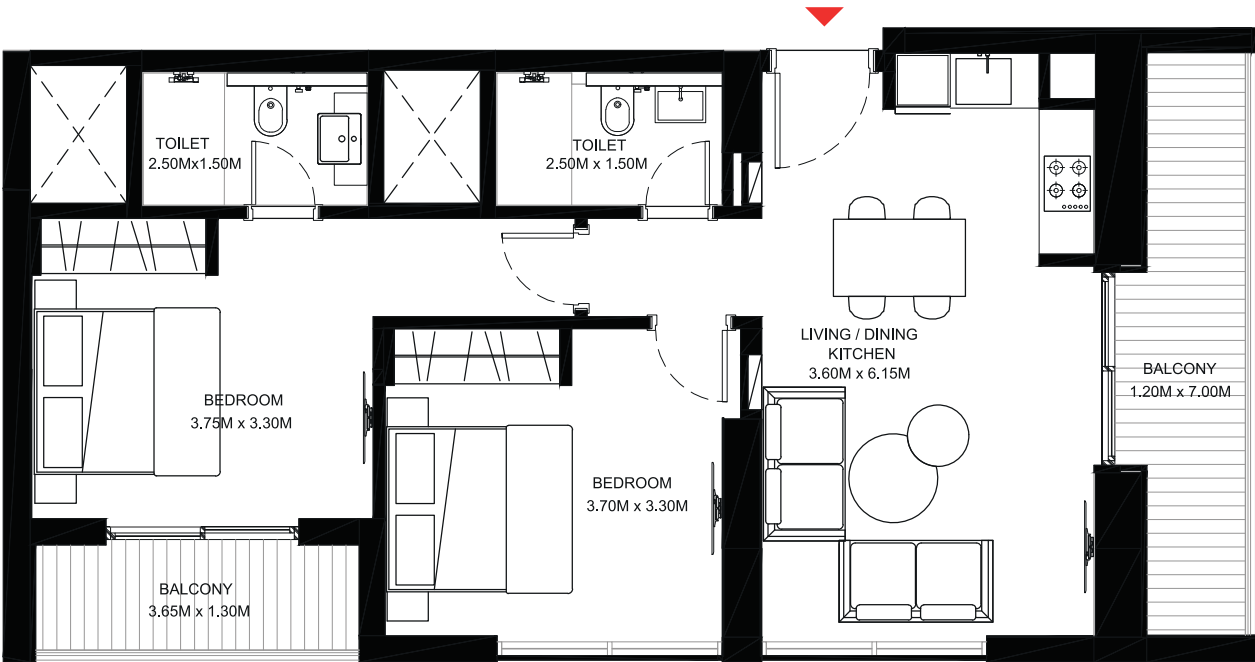
2 BEDROOM APARTMENT

TYPE B (all with two balconies)

Net Saleable Area - 899 Sq. ft.



UNIT TYPE - 2B | LEVELS 2 - 28



Disclaimer: 1. All dimensions are in metric, measured to wall finishes. 2. All materials, dimensions & drawings are approximate. 3. Information is subject to change without notice, at developer's absolute discretion. 4. Actual area may vary from the stated area. 5. Drawings are not to scale. 6. All images used are for illustrative purposes only and do not represent the actual size, features, specifications, fittings and furnishings. 7. The developer reserves the right to make revisions/ alterations, at its absolute discretion, without any liability whatsoever.



SOBHA HARTLAND

Sobha Hartland is an 8 million sq.ft. waterfront community of luxurious apartments, beautiful villas and high-end townhouses, that sits proudly at the prime centre of one of Dubai's most iconic districts, Mohammed Bin Rashid City.



SOBHA HARTLAND AMENITIES



2.4 million sq. ft.
green & open spaces



1.8 km
boardwalk



MBR City,
the heart of Dubai



2 international schools
within community



Waterfront
living



Grand
Clubhouse



UAE

SOBHA HARTLAND

Nad Al Sheba 1,
Sobha Hartland Site Office,
Dubai, UAE.
Tel : +971 800 999 999
www.sobharealty.com

SOBHA BRAND STUDIO

Sobha Sales Gallery, Eiffel 2 Building,
Next to Lamborghini Showroom,
Sheikh Zayed Road,
Dubai, UAE.
Tel : +971 4 423 8064, Ext : 1600
www.sobharealty.com

UK

SOBHA GLOBAL STUDIO

92 Park Lane, Mayfair,
London, W1K 7TA,
United Kingdom.
Tel : +44 (0) 207 099 1000
Email : londonhq@sobha-me.com
www.sobharealty.com