

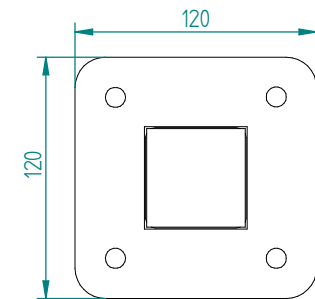
12mm Hole Through (x2)

50mm Weld Cap

Weld Ground Flush

10mm Vent Holes Through

DETAIL A



REVISION HISTORY

Rev.	Description	Date	Approved

PRODUCTION STATUS

Sawn by:	Date:
Fabricated by:	Date:
Welded by:	Date:
Checked by:	Date:
Loaded by:	Date:



TITLE			
SIZE	DWG NO	REV	
A3	#1200POST50_BD_INT		
FILE NAME: #1200POST50_BD_INT.dft			
SCALE:	WEIGHT:	SHEET 1 OF 1	

Item Number	File Name (no extension)	Author	Quantity
1	P111-002	JoshuaShenton	1
2	P121-003	JoshuaShenton	1
3	P121-010	JoshuaShenton	1

DRAWN	NAME	DATE
A.Sharpe	03/04/25	
UNLESS OTHERWISE SPECIFIED DIMENSIONS ARE IN MILLIMETERS ANGLES ±XX°		