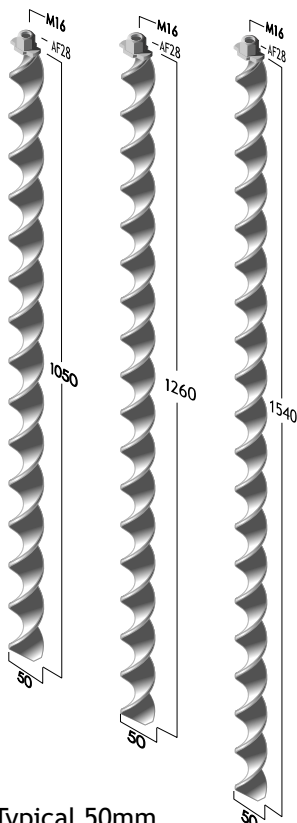
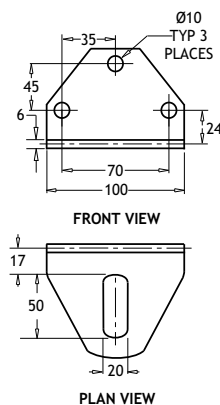


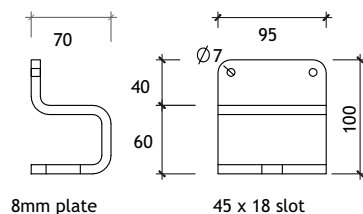
## Spirafix™ Anchors for Timber Buildings, Decking & Walkways



Typical 50mm anchors suitable for building applications, though the 40mm diameter can be used for lighter projects and the 75mm series for maximum load bearing capacity.



**SA342 - 90° Joist Support Bracket 3 Hole Fixing**



**SA601 - U Joist Bracket**  
with slot for M16 Set Screw and 2 x 7mm dia screw holes for securing joist to bracket

Anchors should be installed with the heads as close to the ground as possible to minimise any lateral movement. To achieve this any site should not have a variation in elevation of more than 100mm.

**Quick Reference Load Chart**

Anchor Code	Tensile Load kgs
SF50-10-0490	250 to 500
SF50-10-0630	350 to 700
SF50-10-0840	500 to 1000
SF50-10-1050	800 to 1600
SF50-10-1260	1100 to 2200
SF50-10-1540	1500 to 3000
SF75-12-1100	1500 to 3000
SF75-12-1370	1800 to 3600
SF75-12-1830	2300 to 4600
SF75-12-2640	3800 to 7600

The anchor compressive loads when used for supporting buildings would be at least as high as the tensile loads shown above. The variations shown take into account different soil types and moisture content. For further information please see the [Load Chart](#) on our website (on the "Information" tab).