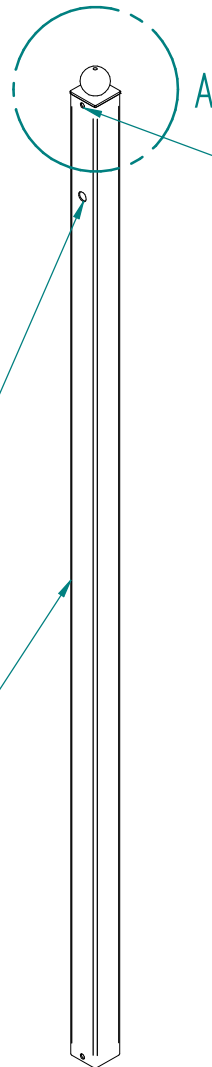


18mm \varnothing Hole in one face

50x50x2.5 RHS

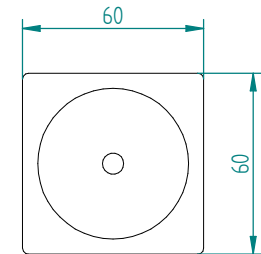


10mm Vent Hole Through

Weld Ground Flush

50mm Ball

60mm Ball Cap



DETAIL A

REVISION HISTORY

Rev.	Description	Date	Approved

PRODUCTION STATUS

Sawn by:	Date:
Fabricated by:	Date:
Welded by:	Date:
Checked by:	Date:
Loaded by:	Date:



TITLE

DRAWN	NAME	DATE
	A.Sharpe	02/04/25

UNLESS OTHERWISE SPECIFIED
DIMENSIONS ARE IN MILLIMETERS
ANGLES ±XX°

SIZE A3	DWG NO #1200SL_POST_SLAM	REV
FILE NAME: #1200SL_POST_SLAM.dft		
SCALE:	WEIGHT:	SHEET 1 OF 1

Item Number	File Name (no extension)	Author	Quantity
1	P111-024	AlexSharpe	1
2	P001-004	JoshuaShenton	1
3	P121-002	AlexSharpe	1