

TITLE

PWHG.2.5x2x3

DRAWN BY

C.Larkin

DATE

23/05/2024

Foundation Requirements:  
The foundation area must be no less in length and width than the external dimensions of the enclosure. The foundation must be constructed so as to be capable of supporting the weight of the enclosure and equipment contained within it. The foundation must be continuous and be no more than ±2mm over any given metre.

DESCRIPTION:

PWHG.2.5x2x3

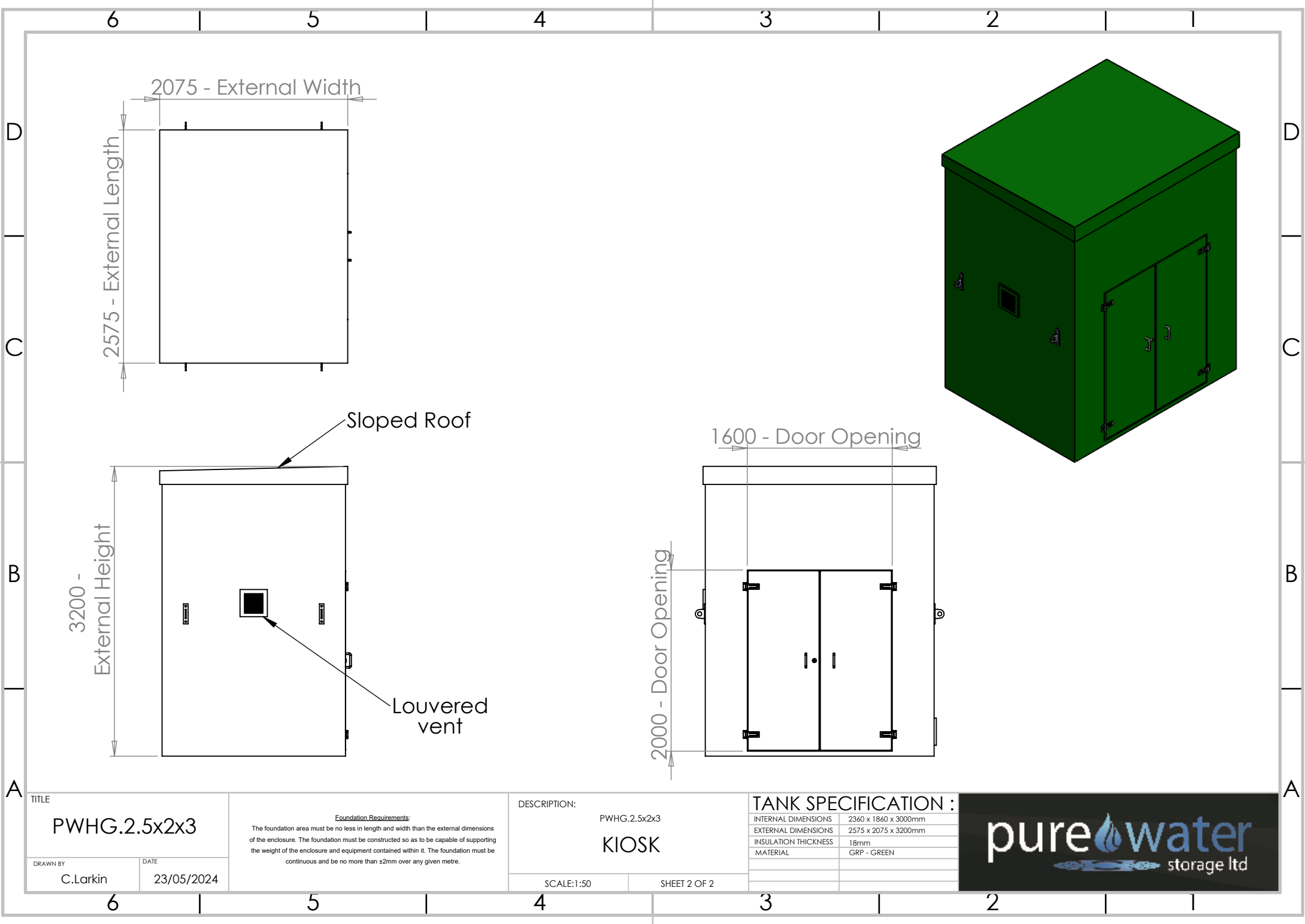
KIOSK

SCALE:1:50

SHEET 1 OF 2

| TANK SPECIFICATION : |                      |
|----------------------|----------------------|
| INTERNAL DIMENSIONS  | 2360 x 1860 x 3000mm |
| EXTERNAL DIMENSIONS  | 2575 x 2075 x 3200mm |
| INSULATION THICKNESS | 18mm                 |
| MATERIAL             | GRP - GREY           |
|                      |                      |
|                      |                      |





|              |            |
|--------------|------------|
| TITLE        |            |
| PWHG.2.5x2x3 |            |
| DRAWN BY     | DATE       |
| C.Larkin     | 23/05/2024 |

Foundation Requirements:  
The foundation area must be no less in length and width than the external dimensions of the enclosure. The foundation must be constructed so as to be capable of supporting the weight of the enclosure and equipment contained within it. The foundation must be continuous and be no more than ±2mm over any given metre.

|              |              |
|--------------|--------------|
| DESCRIPTION: |              |
| PWHG.2.5x2x3 |              |
| KIOSK        |              |
| SCALE:1:50   | SHEET 2 OF 2 |

|                      |                      |
|----------------------|----------------------|
| TANK SPECIFICATION : |                      |
| INTERNAL DIMENSIONS  | 2360 x 1860 x 3000mm |
| EXTERNAL DIMENSIONS  | 2575 x 2075 x 3200mm |
| INSULATION THICKNESS | 18mm                 |
| MATERIAL             | GRP - GREEN          |
|                      |                      |
|                      |                      |

