




Wallis House, 1100 Great West Road, TW8 0HD

£ 365,000

 Brentford

 2 Bedrooms

 2 Bathrooms

 Apartment

 Wallis House

 TW8 0HD

Highlight Features

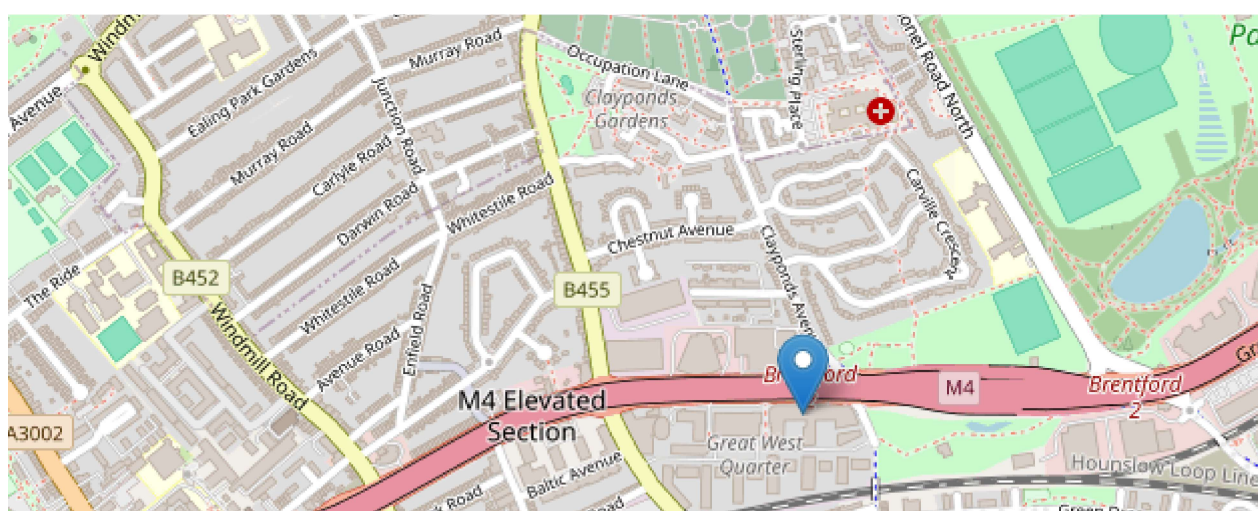
- ✓ 118 Years Leasehold
- ✓ Access to Residents Gym
- ✓ Communal Gardens
 - ✓ Concierge
 - ✓ High Ceiling
- ✓ Secure Underground Parking
 - ✓ Two Bathrooms
 - ✓ Two Double Bedrooms
 - ✓ Underfloor Heating

Description

Spacious loft-style apartment set within the iconic Grade II-listed Wallis House development, offering high ceilings, generous proportions and over 900 sq ft of stylish internal living space.

Ideally positioned for quick connections into Central London while benefiting from the convenience of concierge service, residents' gym and landscaped communal gardens.

Map



Interested In This Property?

Book a viewing using the form or get in touch with us on the details below:

Kingworths

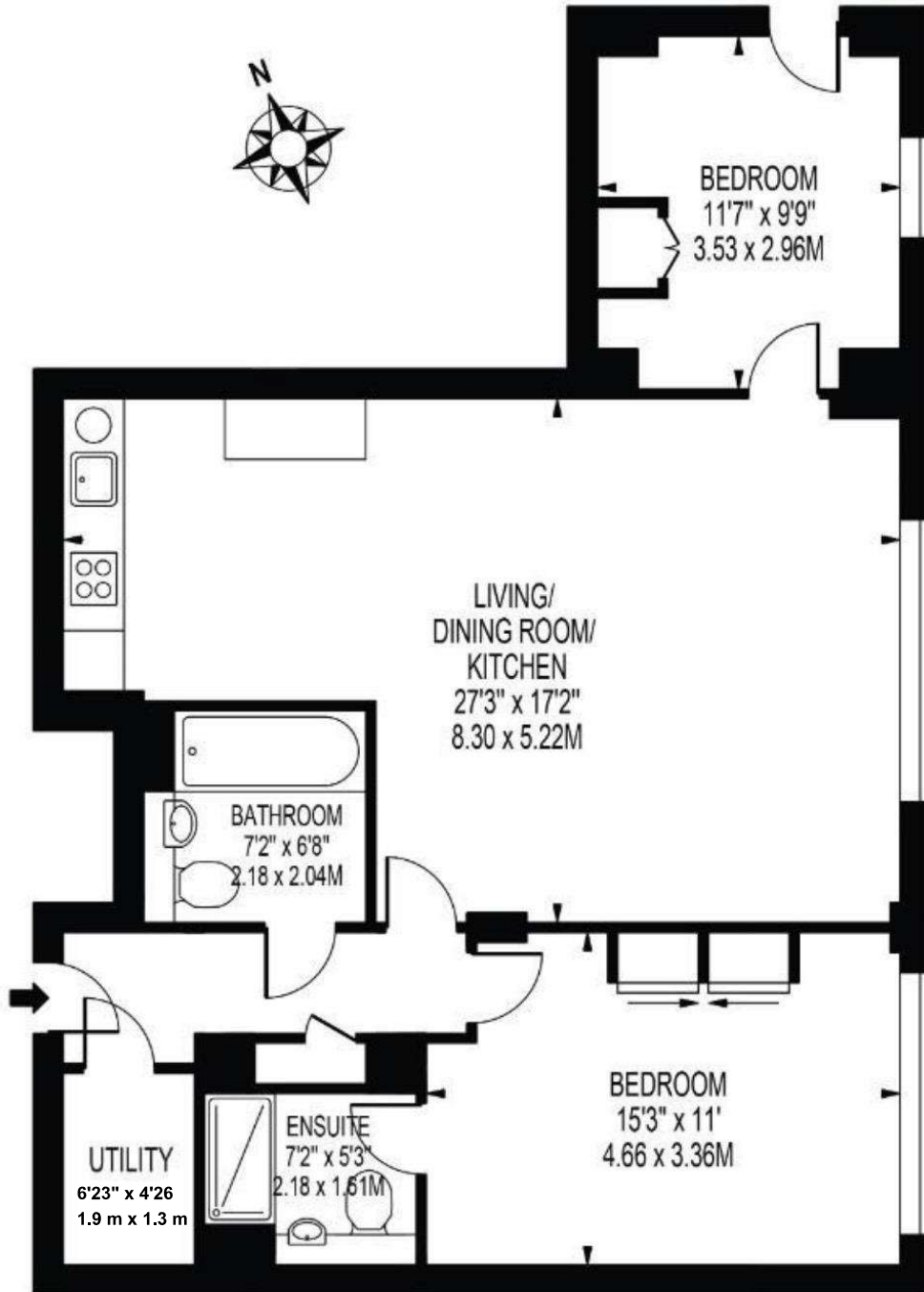
Westlink House, 981 Great West Road, Brentford, TW8 9DN

Tel: 020 8226 0141

Email: info@kingworths.com

WALLIS HOUSE

APPROXIMATE GROSS INTERNAL FLOOR AREA: 914 sq ft / 85 sq m



GROUND FLOOR

FOR ILLUSTRATION PURPOSES ONLY

THIS FLOOR PLAN SHOULD BE USED AS A GENERAL OUTLINE FOR GUIDANCE ONLY AND DOES NOT CONSTITUTE IN WHOLE OR IN PART AN OFFER OR CONTRACT. ANY INTENDING PURCHASER OR LESSEE SHOULD SATISFY THEMSELVES BY INSPECTION, SEARCHES, ENQUIRIES AND FULL SURVEY AS TO THE CORRECTNESS OF EACH STATEMENT. ANY AREAS, MEASUREMENTS OR DISTANCES QUOTED ARE APPROXIMATE AND SHOULD NOT BE USED TO VALUE A PROPERTY OR BE THE BASIS OF ANY SALE OR LET.