





Wallis House, 1100 Great West Road, TW8 0HD

£ 365,000

 Brentford

 2 Bedrooms

 2 Bathrooms

 Apartment

 Wallis House

 TW8 0HD

## Highlight Features

- ✓ 118 Years Leasehold
- ✓ Access to Residents Gym
- ✓ Communal Gardens
- ✓ Secure Underground Parking
  - ✓ Two Bathrooms
  - ✓ Two Double Bedrooms

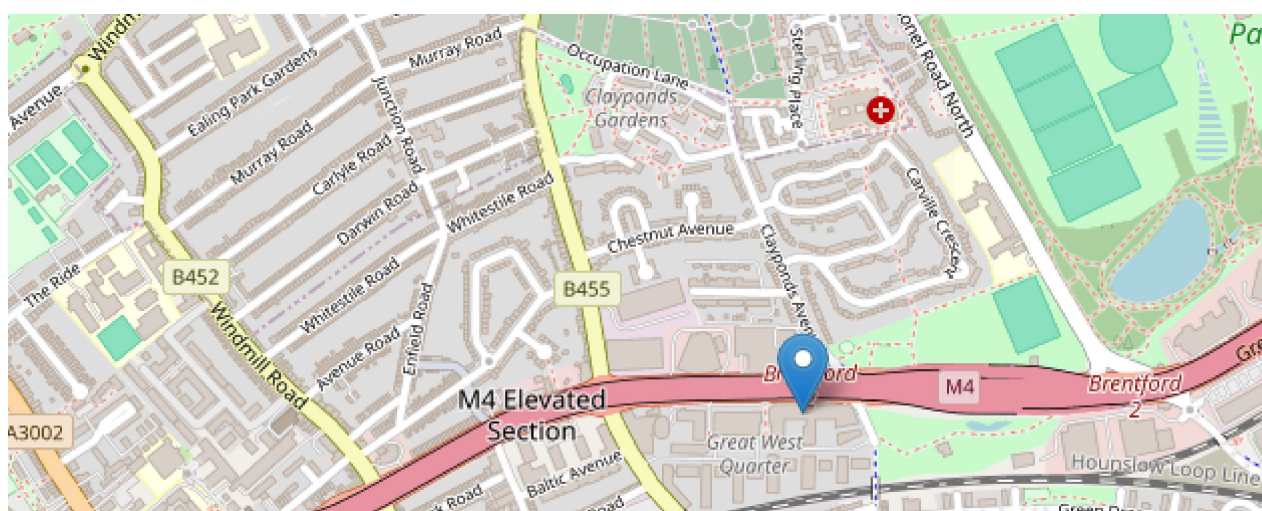
## Description

Stunning, well maintained two double bedroom apartment within grade II-listed, 1930s converted building originally built by Wallis, Gilbert and Partners. Wallis House is a landmark building with a lot charm and character and forms part of the GWQ

development redeveloped by Barratt Homes. The property comprises of 914 square feet | 85 sq m of internal space and consists of two good size bedrooms, one with an en suite, very high ceilings, plenty of storage space and a utility room. Further benefits include secure underground parking, residents gym, communal gardens and on site concierge operating from from 7am - 7pm.

Wallis House is situated on Great West Road with quick access to and from central London and Heathrow. Kew Bridge mainline station is within 10 minutes' walk. Gunnersbury station which is on District and Overground lines is within 7 minutes bus journey via H91 bus. River Thames and Gunnersbury park are within short walk away.

## Map



## Interested In This Property?

Book a viewing using the form or get in touch with us on the details below:

Kingworths

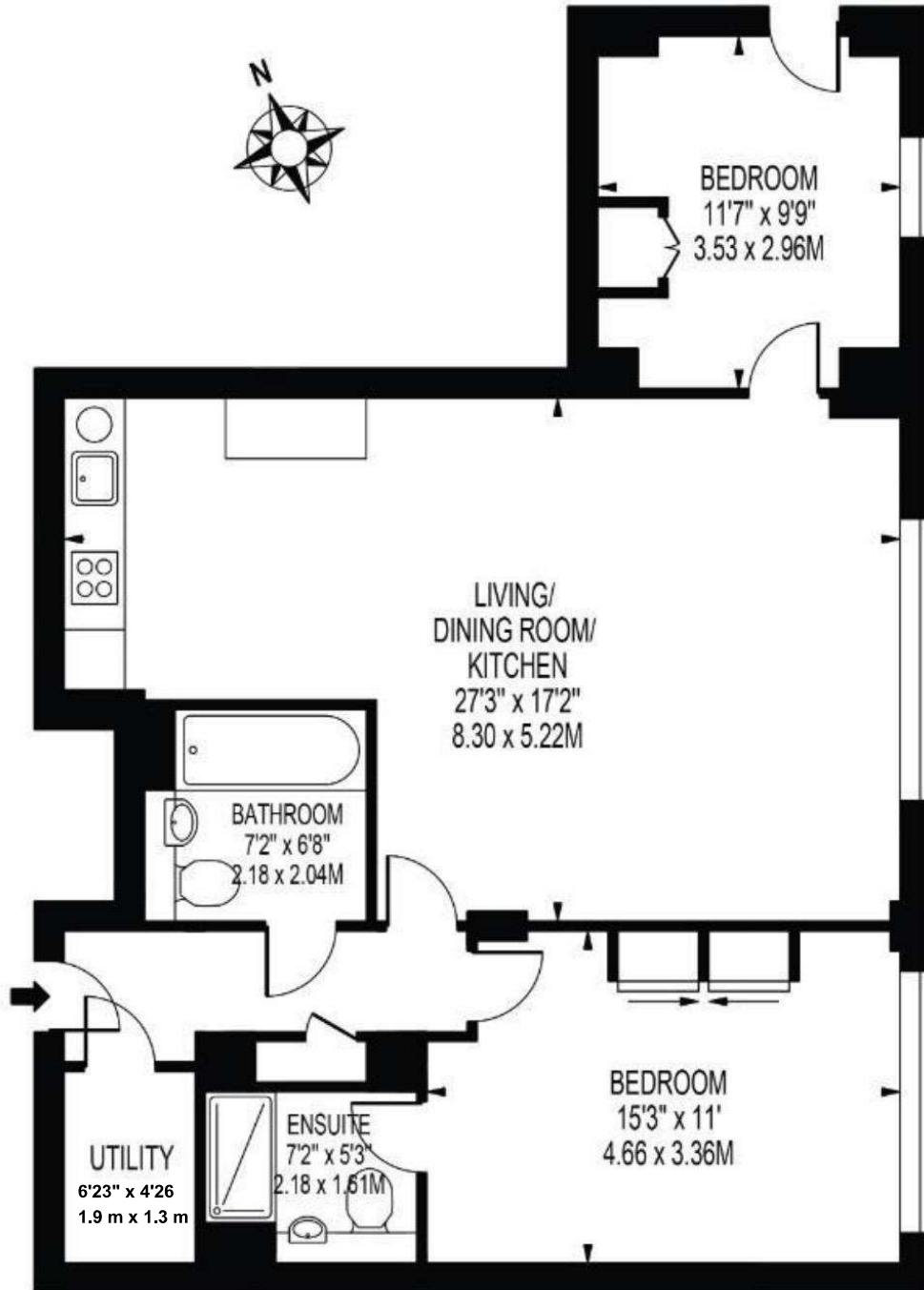
Westlink House, 981 Great West Road, Brentford, TW8 9DN

Tel: 020 8226 0141

Email: [info@kingworths.com](mailto:info@kingworths.com)

# WALLIS HOUSE

APPROXIMATE GROSS INTERNAL FLOOR AREA: 914 sq ft / 85 sq m



## GROUND FLOOR

FOR ILLUSTRATION PURPOSES ONLY

THIS FLOOR PLAN SHOULD BE USED AS A GENERAL OUTLINE FOR GUIDANCE ONLY AND DOES NOT CONSTITUTE IN WHOLE OR IN PART AN OFFER OR CONTRACT. ANY INTENDING PURCHASER OR LESSEE SHOULD SATISFY THEMSELVES BY INSPECTION, SEARCHES, ENQUIRIES AND FULL SURVEY AS TO THE CORRECTNESS OF EACH STATEMENT. ANY AREAS, MEASUREMENTS OR DISTANCES QUOTED ARE APPROXIMATE AND SHOULD NOT BE USED TO VALUE A PROPERTY OR BE THE BASIS OF ANY SALE OR LET.