



---

# COMMERCIAL VAN CONVERSIONS



01206 911 383



[customerservices@152ltd.co.uk](mailto:customerservices@152ltd.co.uk)



# WE ARE NOW PRO-PARTNERS WITH WORK SYSTEMS UK

At OneFiveTwo Vehicle Conversions we aim to cater to the unique needs of your business by providing customized vehicle solutions.

This process involves transforming standard vans into specialized vehicles tailored to your specific business requirements.

Whether it's installing specialized shelving, adding secure storage options, or modifying the interior to accommodate passengers, we ensure that each vehicle meets stringent safety standards as well as the specific operational needs of your business.




# WORKBOX / PROBOX

Our **Flatbed Covers** create a protected space against the weather, wind, and theft.

They come fully equipped with central locking, and a warning light inside the passenger compartment that warns if any hatches are not closed properly as well as three LED lamps with low consumption but a brightness of 3000 lumens.



To maximise storage in your vehicle, you can also choose, among other things, a storage box for long goods, roof bars or a ladder on the rear hatch. It is also possible to install racking solutions and cargo slides inside the cover.



# STORAGE SOLUTIONS

## BASE 42:

This Shelf provides ample storage space for tools, cases and smaller range of supplies.

### **This Shelf Would be Great For You If:**

- You are looking for an affordable racking solution.
- Your gear consists of mostly cases and boxes.
- This shelf is popular amongst painters and, bricklayers.







## LS3:

LS3 is one of the most popular shelves, it is often used by property managers, service technicians, electricians, plumbers, and carpenters.



This rack provides a lot of space to safely store tools, cases, supplies and other items. The drawers are often equipped with our draw inserts and dividers, while the tool board on the side panel offers extra space.

## LB5 / PRO5:

The racking comes equipped with five drawers in varying sizes. The Unit provides ample storage space for cases, larger tools, as well as other supplies you may require.

### **This Racking System is for Those Who:**

- **W**ant easy access to drawers in smaller van models.
- Who want lots of shelves, but also a few drawers, for larger van models.



## LD42:

The drawers are on ball bearing rails and are easily accessible from the sliding doors. They are most often fitted on the passenger side and pull out in the direction of travel.



Each drawer has a maximum capacity load of 35kg and the rear section of the unit provides good storage options for both cases and tools.

## WORK6:

If you need a workbench in your vehicle this unit will be a perfect fit. It comes with drawers easily accessible from the sliding door and offers shelf space in the rear section to accommodate all of your equipment.

The workbench is made of 8mm compact laminate which is extremely durable.





## EXPERT:

Van Racking for those who are looking for lots of flexibility and require multiple storage.

With 8 drawers on ball bearing rails in total this unit is perfect to accommodate lots of smaller supply items such as fittings or switches. The drawers have varying sizes and give everything its place. Drawers can also be customized to your needs with drawer dividers and inserts.

This racking unit design is popular among plumbers and maintenance.



# ACCESSORIES

You can always Complement your Racking with Van Accessories that suit your needs.

**Below you will see a selection of products that are popular with our customers:**



**SMARTBOX**  
230 mm / 330 mm



**SMARTBOX**  
8x tubes /  
5x spray cans



**HOLDER**  
Spirit-level / sledge  
hammer



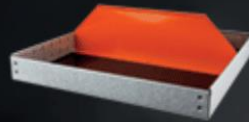
**MULTI-COMPARTMENT**  
230 mm / 330 mm



**BOX**  
260 mm / 420 mm



**WINDOW /  
DIVIDER**



**SHELF DIVIDER**  
260 mm / 420 mm



**BOX RAIL**  
260 mm / 420 mm



**INSERT SET**  
350 mm H: 70 mm  
6 compartments



**INSERT SET**  
350 mm H: 140 mm  
6 compartments



**INSERT SET**  
612 mm H: 70 mm  
10 compartments



**INSERT SET**  
612 mm H: 140 mm  
10 compartments



**LOAD EYELETS**  
2 pieces



**LOAD STOP**  
2 pieces



**BUTTONS**  
4 functionalities

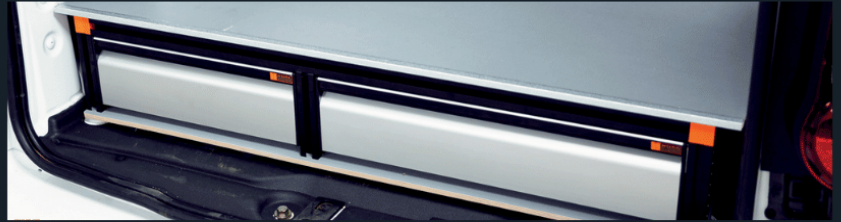


**TRANSPORTBOX**  
40 x 30 x 23 cm



# UNDERFLOOR STORAGE

Underfloors are one of the most popular racking solutions with our customers.



The underfloor system offers excellent access to items stored in its large drawers. This allows the space above the floor is kept clear and can be utilised as a whole for larger items such as pallets or larger tools.

# CARGO SLIDE

A Cargo Slide can be mounted facing the rear or sliding doors, or the bed if your vehicle is a pickup truck.



A slide is perfect for those who drive around with heavier tools such as: air compressors, welding machines, etc. The slides are practical and ergonomic, as they minimise heavy lifting.

We can mount the cargo slide either on top or underneath your underfloor storage



# WORK LIGHTS

Work Lighting is a crucial product when you use your vehicle as a work place at night or in places with limited natural light.

We offer both LED Loops and LED Work Lights for installation in ceilings, as spotlights and floodlights.



All our Work Lights that are installed on the outside of the vehicle are ACT Tested and have been approved in Swedac's climate chamber. This means that the work lights are subjected to a 6-week test that corresponds to 2 years of driving under extreme conditions.




# AUXILIARY LIGHTS



Auxiliary Lights and LED Ramps are for those who require extra bright light in traffic or on your work vehicle.

By supplementing the vehicle's high beam with better and stronger light, you get a more reliable high beam that illuminates dark roads and makes you and your vehicle easily detectable.

We can offer individual auxiliary lights as well as packages that can be combined according to your needs.





# ROOF EQUIPMENT

Roof equipment is a smart, flexible and easily accessible way to store materials. With a roof platform, you can create accessibility and load space on your vehicles's roof. Roof racks open up many different types of storage.

Our range includes cargo rollers which combined with roof racks come in handy when you need to load and unload bulky/heavy materials. Rollers are also available combined with ladder holders.

Conduit boxes are another accessory in roofing equipment where you can store, for example, pipes with ease.



# TOOL BOARDS

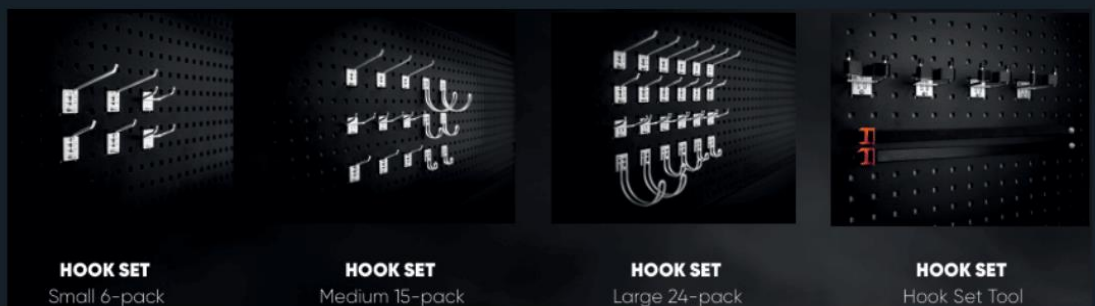
You can always supplement your racking with tool boards. A tool board can be placed inside your vehicle and also on the rear doors so you can easily access your tools.

Our tool boards are always cut to shape and adapted to fit different vehicle models, enabling you to choose the size that best suits your needs.



## ACCESSORIES FOR TOOL BOARDS:

You can even equip your tool board with our accessories and create your own setup of hooks and smart boxes on the tool board to find the best solution for you. With these, you can easily hang up your tools, which enables quick access and makes it easier to find what you need.



# THEFT PROTECTION

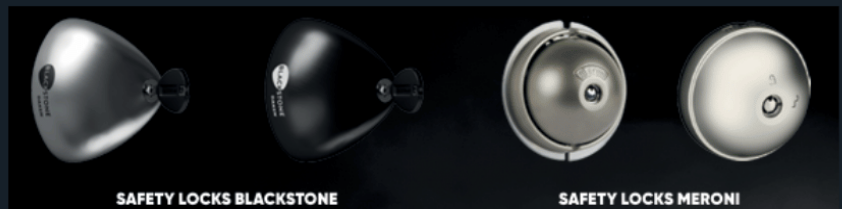
## SAFETY LOCKS:

Car break-ins are becoming more common and company cars with valuable cargo such as tools and machines are particularly interesting to thieves. Therefore, it is a good idea to invest in a robust safety lock that complements the car's own locking system.

The locks in our range can be mounted on both rear and sliding doors and are available in several different designs.

### **Choose the Locking Mechanism that Suits you:**

Key Locking, Automatic Locking when the door closes or a Combo Lock that does both.



## ALARM:

Alarms are another anti-theft device that prevents break-ins in your vehicle. We work with the best products on the market.

In order to guarantee the function of the alarm, we sell alarms only together with installation at one of our service centres.







# POWER AND PRESSURED AIR

## WHICH SOLUTIONS EXIST?

Do you need a reliable power or compressed air solution for your vehicle? With our wide range and smart solutions we can meet all kinds of needs.

We offer everything from LPS (all-in-one lithium power units) and inverters to 230V compressors. We understand the importance of a well-functioning workplace and have all the necessary peripherals. Whether battery monitoring, battery chargers, hose/cable reels or sockets.

Feel free to contact us and we will help you to develop a suitable solution for you.

## WHY SHOULD YOU BUY AN INVERTER?

An inverter is a smart investment for you who have the vehicle as a workplace. It gives you the freedom to work and use electric products wherever you are.

You can save both time and money by avoiding delays or unplanned work stoppages caused by discharged work tools and batteries. Or why not increase convenience with access to for example a coffee maker or microwave?



# CAMPERVAN CONVERSIONS

Our team of experts have years of experience in campervan conversions and is dedicated to providing you with exceptional service and results that exceed your expectations.

We offer a range of conversion packages, from basic conversions to fully customized premium conversions, so you can choose the option that best suits your needs.



# COMPANY CONTACT



01206 911 383



customerservices@152ltd.co.uk



Unit Forest 2, Bradfield Lodge



<https://www.152ltd.co.uk/>

