

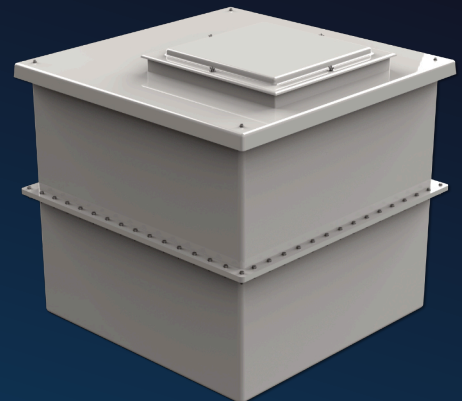
Grp Two Piece Cold water storage tanks

A Comprehensive range of two piece cold water storage tanks manufactured from Kiwa and WRAS approved Grp materials. The same configurations and capacities as the one piece tank range.

Comprising an upper and lower section of equal height, incorporating an external horizontal joint flange allowing the sections to be bolted together on site.

All sealant and fixings for the joint flange are supplied with the tank.
Please scan the QR code on the tank label to view assembly instructions.
Fully encapsulated insulation to sides and lid.
Close fitting and sealed lid which is removable for maintenance.

Tanks storing over 1000 litres nominal have an access man-way with removable lid providing a 520 x 520mm opening, allowing access for maintenance and inspection.



Applications

Particularly suitable for sites with access restrictions, allowing a large tank to be carried through a doorway or similar restriction, then assembled once in position.

Provides a cost saving in comparison to a sectional tank.

Suitable for all cold water applications including:

- Potable & Non Potable water storage
- Process water (including process cooling) applications -15° to +30°c

Provides mains water protection for fluid category 1,2,3 & 4 with standard lid arrangement & fluid category 5 when back flow protection is required.

Approvals & Certification

Full Kiwa and WRAS approval

Manufactured to BS EN 13280:2001

Quality System manufactured in accordance with ISO 9001: 2000

Specification - General

Manufactured from highest quality Grp materials.

CFC free PU foam insulation is completely encapsulated within the Grp laminate.

Structural support where required is provided by rolled hollow section steel, braced with welded corner angles, which is then completely encapsulated within the Grp laminate.

The outer surface of the tank is coated with polyester gel coat to ensure tank suitability for external positioning in most extremes of weather as standard.



Optional items for this product range include:

- Raised float valve housings.
- Equilibrium and BS1212 float valves.
- Aylesbury "Keraflo" delayed action float valves.
- Screened overflows & warning pipes.
- Flanged tank connectors.
- Float operated switches to suit level control.
- Temperature sensors.
- Level gauges.
- Drip trays.
- Encapsulated ply base.
- Steel support frames.
- Fitted with internal divisions or weir plates.

and much more....

For details of optional items, please refer to our website:
www.purewaterstorage.co.uk

Grp Two Piece Standard tank range



Imperial configuration tanks	Product	Nominal Capacity	Internal Dimensions	External Dimensions	Section Dimensions
	PW90.INS/2	90 litres	610 x 305 x 510mm high	790 x 500 x 539mm high	790 x 500 x 252.5mm high
	PW160.INS/2	160 litres	760 x 460 x 460mm high	950 x 655 x 499mm high	950 x 655 x 232.5mm high
	PW225.INS/2	225 litres	610 x 610 x 610mm high	805 x 805 x 643mm high	805 x 805 x 307.5mm high
	PW338.INS/2	338 litres	610 x 610 x 910mm high	805 x 805 x 949mm high	805 x 805 x 457.5mm high
	PW340.INS/2	340 litres	915 x 610 x 610mm high	1090 x 785 x 641mm high	1090 x 785 x 305mm high
	PW454.INS/2	454 litres	1067 x 610 x 710mm high	1255 x 805 x 749mm high	1255 x 805 x 357.5mm high
	PW570.INS/2	570 litres	990 x 760 x 760mm high	1150 x 925 x 799mm high	1150 x 925 x 382.5mm high
	PW650.INS/2	650 litres	1067 x 610 x 1000mm high	1255 x 805 x 1039mm high	1255 x 805 x 502.5mm high
	PW680.INS/2	680 litres	1220 x 915 x 610mm high	1395 x 1087 x 649mm high	1395 x 1087 x 305mm high
	PW712.INS/2	712 litres	1090 x 860 x 760mm high	1240 x 1010 x 796mm high	1240 x 1010 x 382.5mm high
	PW909.INS/2	909 litres	1168 x 890 x 890mm high	1330 x 1050 x 929mm high	1330 x 1050 x 447.5mm high
	PW1135.INS/2	1135 litres	1524 x 915 x 812mm high	1680 x 1080 x 905mm high	1680 x 1080 x 408.5mm high
	PW1364.INS/2	1364 litres	1370 x 1092 x 915mm high	1570 x 1290 x 1008mm high	1570 x 1290 x 460mm high
	PW1590.INS/2	1590 litres	1524 x 1143 x 915mm high	1700 x 1310 x 1008mm high	1700 x 1310 x 460mm high
PW1818.INS/2	1818 litres	1220 x 1220 x 1220mm high	1390 x 1390 x 1308mm high	1390 x 1390 x 610mm high	
PW2272.INS/2	2272 litres	1828 x 1220 x 1016mm high	2020 x 1410 x 1109mm high	2020 x 1410 x 510.5mm high	
PW2726.INS/2	2726 litres	1828 x 1220 x 1220mm high	2020 x 1410 x 1313mm high	2020 x 1410 x 612.5mm high	
PW3185.INS/2	3185 litres	2440 x 1220 x 1070mm high	2610 x 1410 x 1163mm high	2610 x 1410 x 537.5mm high	
PW3636.INS/2	3636 litres	2440 x 1220 x 1220mm high	2610 x 1410 x 1313mm high	2610 x 1410 x 612.5mm high	
Metric configuration tanks	Product	Nominal Capacity	Internal Dimensions	External Dimensions	Section Dimensions
	PW125.INS/2	125 litres	500 x 500 x 500mm high	690 x 690 x 509mm high	690 x 690 x 252.5mm high
	PW187.INS/2	187 litres	500 x 500 x 750mm high	690 x 690 x 759mm high	690 x 690 x 377.5mm high
	PW250.INS/2	250 litres	1000 x 500 x 500mm high	1180 x 680 x 536mm high	1180 x 680 x 255mm high
	PW251.INS/2	250 litres	500 x 500 x 1000mm high	690 x 690 x 1009mm high	690 x 690 x 502.5mm high
	PW305.INS/2	305 litres	500 x 500 x 1220mm high	690 x 690 x 1229mm high	690 x 690 x 612.5mm high
	PW375.INS/2	375 litres	500 x 500 x 1500mm high	690 x 690 x 1509mm high	690 x 690 x 752.5mm high
	PW500.INS/2	500 litres	1000 x 1000 x 500mm high	1180 x 1180 x 536mm high	1180 x 1180 x 252.5mm high
	PW501.INS/2	500 litres	1000 x 500 x 1000mm high	1180 x 680 x 1036mm high	1180 x 680 x 502.5mm high
	PW601.INS/2	600 litres	1000 x 500 x 1200mm high	1180 x 680 x 1236mm high	1180 x 680 x 602.5mm high
	PW750.INS/2	750 litres	1500 x 1000 x 500mm high	1702 x 1202 x 536mm high	1702 x 1202 x 252.5mm high
	PW751.INS/2	750 litres	1000 x 1000 x 750mm high	1180 x 1180 x 786mm high	1180 x 1180 x 377.5mm high
	PW1000.INS/2	1000 litres	1000 x 1000 x 1000mm high	1180 x 1180 x 1093mm high	1180 x 1180 x 502.5mm high
	PW1050.INS/2	1050 litres	1500 x 500 x 1400mm high	1665 x 665 x 1453mm high	1665 x 665 x 705mm high
	PW1125.INS/2	1125 litres	1500 x 500 x 1500mm high	1665 x 665 x 1553mm high	1665 x 665 x 755mm high
	PW1220.INS/2	1220 litres	1000 x 1000 x 1220mm high	1180 x 1180 x 1313mm high	1180 x 1180 x 612.5mm high
	PW1500.INS/2	1500 litres	1500 x 1000 x 1000mm high	1702 x 1202 x 1093mm high	1702 x 1202 x 502.5mm high
	PW1501.INS/2	1500 litres	1000 x 1000 x 1500mm high	1180 x 1180 x 1593mm high	1180 x 1180 x 752.5mm high
	PW2000.INS/2	2000 litres	2000 x 1000 x 1000mm high	2202 x 1202 x 1093mm high	2202 x 1202 x 502.5mm high
	PW2001.INS/2	2000 litres	1000 x 1000 x 2000mm high	1180 x 1180 x 2093mm high	1180 x 1180 x 1002.5mm high
	PW2250.INS/2	2250 litres	1500 x 1000 x 1500mm high	1702 x 1202 x 1593mm high	1702 x 1202 x 752.5mm high
	PW2501.INS/2	2500 litres	2000 x 1000 x 1250mm high	2202 x 1202 x 1343mm high	2202 x 1202 x 627.5mm high
	PW3000.INS/2	3000 litres	3000 x 1000 x 1000mm high	3202 x 1202 x 1093mm high	3202 x 1202 x 502.5mm high
	PW3001.INS/2	3000 litres	2000 x 1000 x 1500mm high	2202 x 1202 x 1593mm high	2202 x 1202 x 752.5mm high
	PW3750.INS/2	3750 litres	2500 x 1500 x 1000mm high	2694 x 1694 x 1093mm high	2694 x 1694 x 505.00mm high
	PW4000.INS/2	4000 litres	2000 x 2000 x 1000mm high	2192 x 2192 x 1093mm high	2192 x 2192 x 502.5mm high
	PW4001.INS/2	4000 litres	2000 x 1000 x 2000mm high	2202 x 1202 x 2093mm high	2202 x 1202 x 1002.5mm high
	PW4500.INS/2	4500 litres	2500 x 1500 x 1200mm high	2694 x 1694 x 1293mm high	2694 x 1694 x 602.5mm high
	PW5000.INS/2	5000 litres	2500 x 2000 x 1000mm high	2692 x 2192 x 1093mm high	2692 x 2192 x 502.5mm high
	PW5625.INS/2	5625 litres	2500 x 1500 x 1500mm high	2694 x 1694 x 1593mm high	2694 x 1694 x 752.5mm high
	PW6000.INS/2	6000 litres	3000 x 2000 x 1000mm high	3192 x 2192 x 1093mm high	3192 x 2192 x 502.5mm high
	PW6001.INS/2	6000 litres	2000 x 2000 x 1500mm high	2192 x 2192 x 1593mm high	2192 x 2192 x 752.5mm high
PW7500.INS/2	7500 litres	2500 x 2000 x 1500mm high	2692 x 2192 x 1593mm high	2692 x 2192 x 752.5mm high	
Raised float valve housing	Product	To suit valve type		Addition to internal tank height	
	FVH4	Up to 54mm aylesbury & Equilibrium		+350mm	
	FVH5	65mm + & multiple valves		+450mm or higher depending on size of valve	
	FVH6	Up to 28mm Equilibrium		+325mm	